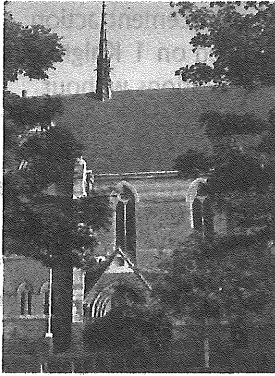


Stoneygate

NEWSLETTER
SEPTEMBER 2005

Conservation Area Society



A STROLL THROUGH OUR SUBURB

Once again, well-known local historian and author Richard Gill has kindly agreed to lead one of his famous walks around our suburb.

He has the great gift of helping one to "notice" that which has previously just been seen. It will be a fascinating adventure: all SCAS asks is a donation of £3.

St John's Church, Clarendon Park Road, pictured left, is the place to meet up – join us on Sunday September 11 at 2.30pm.

Henry Evans

Attacked on all sides . . .

Caroline Cook writes:

Is walking along local pavements becoming hazardous for you?

As someone who frequently walks into town along London Road, I often find myself being clobbered by overhanging branches or hemmed in between burgeoning foliage and cyclists weaving their way along.

A proliferation of cable-boxes, posts, etc makes life increasingly difficult for pedestrians. Over-thick hedges are stuffed with litter, or it lies in drifts at their base, in mounds caught between the pavement clutter or in tree-pits. Can we do nothing about this in a conservation area?

Finally, enraged by no action having been taken for weeks to mend a damaged pedestrian guard-rail at the corner of London Road and Stoneygate Road, I got out my camera and in May I sent in some photos of this and other problems on London Road to the council's Katrina Hope (Highway Management Officer, Regeneration and Culture, 86 Leycroft Road, Leicester LE4 1BZ).

I was surprised when, shortly

afterwards, the guard-rail was repaired. I also saw that there had been some cutting-back of hedges.

Katrina Hope assured me that "regular highway inspections take place". She wrote that "it is ultimately the responsibility of property owners to prune their trees and shrubs", and that "if during the growing season a shrub or tree becomes a concern, then individual sites can be reported to the council's Customer Service Line on 252 7000. I haven't tried this yet.

In August I sent her some more photos of London Road. These illustrated, amongst other things:

1. The continued failure to prune overhanging branches.
2. The proliferation of weeds and litter in tree-pits.
3. The lamentable appearance of 307 London Road (former South Lodge Day Centre), where foliage is creeping over the pavement.
4. Vandalised branches on the pavements.
5. A completely collapsed hedge outside 320 London Road.

Katrina Hope has informed me that

"letters have been sent out to owners requesting pruning works". She wrote that my other comments have been forwarded to "colleagues in the cleansing service and social care and health".

I hope there will be some improvements. What is abundantly clear is that we have to be proactive and persistent if we are not satisfied with the status quo. Photos help.

Mayfield Roundabout (again!)

Mr. D G Patel (direct line 223 2112) is the person in charge of the London Road Corridor Improvement Project, which includes a new plan for the Mayfield Roundabout. Work on this, he says, will begin by 19 September.

279 London Road (Day Nursery)

In July the council's Development Control granted the premises a "limited period approval" until 31 January 2007. The council "would wish to be certain that the premises were not causing traffic problems". SCAS members in the vicinity are asked to monitor. The officer in charge at the moment is Paul Green (252 7352).

As ever the SCAS committee has considered and investigated various planning applications made in the conservation area in this period.

These include:

330a London Road: Demolition and replacement with flats – refused.

North Avenue (just outside the area): 5 homes – withdrawn.

Stoneygate Court: Replacement windows to flats – approved.

269 London Road: Change of use to flats – approved.

28 Knighton Road: Change of use to day centre – pending.

22 Knighton Park Road (just outside the area): Development of flats – pending.

2 Alexander Road: Change of use from garage to flat – pending.

Ratcliffe Road: Extension of care home – pending.

Outstanding applications from previous periods and awaiting a decision include the development of flats at 7 Stanley Road and the future of 27 Knighton Road (conversion to flats).

Two public appeals against enforcement action taken by the council are awaited on 1 Knighton Park Road (extensions and alterations without consent) and 16 Knighton Drive (development to rear).

David Oldershaw and Anna Revill

Have your say on future of planning

Leicester City Council is in consultation over the definition of its "Statement of Community Involvement". The document will set out how the council seeks to involve members of the public in planning matters and the development of planning policy in the future.

To give your views download the document at www.leicester.gov.uk/ldf.

William Wells

A London treat for gardeners

Leicestershire and Rutland Garden Trust is organising a coach trip to the capital.

The day will include optional visits to Kensal Rise Cemetery and Chelsea Physic Garden.

Contact Elizabeth Bacon on 270 5711 to learn more about the excursion, which takes place on Sunday 18 September, departing Glebe Road (Botanic Garden entrance) at 8am.

Civic Society online

The activities of Leicester Civic Society can now be accessed online following the launch of a dedicated website, www.leicestercivicsociety.org.uk.

The site allows visitors to keep up to date with walks, talks and current planning matters.

Stoneygate Conservation Area Society



I/we wish to join the Society/renew membership and enclose cash/cheque for £5 (per household per year) as from 1 April 2005.

Name

Address

Tel

Please make cheques payable to Stoneygate Conservation Area Society.

Send to: Odette Fogler, Membership Secretary, 5 Calbri Court, 37 Knighton Drive, Leicester LE2 3HD (tel 270 5623)